

2 FIRST FLOOR PLAN

1 : 50

PIPE SUPPORT DETAILS

PIPE SIZE	DISTANCE BETWEEN HANGERS	STUD ROD SIZES
25 MMØ	2.1 M.	8 MM.
32 MMØ	2.5 M.	8 MM.
40 MMØ	3 M.	8 MM.
50 MMØ	3 M.	8 MM.
65 MMØ	3.6 M.	10 MM.
80 MMØ	3.6 M.	10 MM.

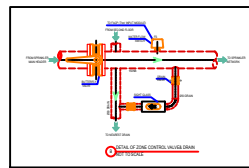
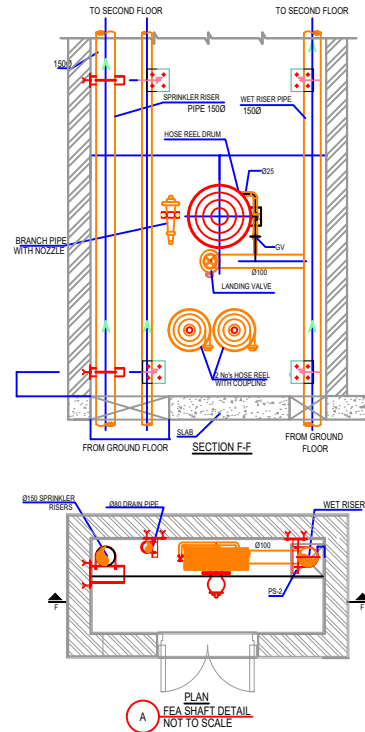


Table 27.5.3.7 Number of Sprinklers Above and Below a Ceiling	
Steel	
25 mm	2 SPRINKLERS
32 mm	4 SPRINKLERS
40 mm	7 SPRINKLERS
50 mm	15 SPRINKLERS
65 mm	30 SPRINKLERS
80 mm	60 SPRINKLERS
100 mm	100 SPRINKLERS
150 mm	ABOVE 100 SPRINKLERS

NOTES:

01. ALL DIMENSIO S ARE IN MM UNLESS OTHERWISE MENTIONED.
02. THIS DRAWING TO BE READ IN CONJUNCTOIN WITH RELEVANT ARHITECTURAL, STRUCTURAL AND OTHER SERVICES DRAWING.
03. MINOR MODIFICATIONS SHALL BE CARRIED OUT AS PER SITE CONDITION.
04. LOCATION & OPERATION OF VALVES SHALL BE KEPT AS PER SITE CONDITION AND OPERATION CONVICIENCE.
05. PIPE MATERIAL SHALL BE HEAVY GRADE MS.
06. HYDRANT/LANDING VALVE SHALL BE MAXIMUM 1200MM FROM FFL.
07. FOR EACH WET RISER COME DOWN COMER PROVIDED AIR CUSHION TANK AT TERRACE LEVEL.
08. ONE NO.OF PRESSURE GAUGE TO BE PROVIDED IN EACH INTERNAL HYDRANT RISER PER FLOOR.
09. AT TERRACE/REMOTE LEVEL HYDRANT,MINIMUM 3.5 KG/SQ.CM. PRESSURE SHALL BE MAINTAINED.
10. MILD STEEL (CLASS-C) PIPES CONFIRMING TO IS:1239/3589 INCLUDING ALL FITTINGS LINK BENDS,ELBOWS,TEES,ANCHOR FASTNER,COUPLINGS ETC.SHALLBE USED IN FIRE FIGHTING SYSTEM.
11. SCREWED JOINTS WITH DI FITTINGS SHALL BE USED UPTO 50 MM DIA & V GROOVE BUTT WELDING JOINTS SHALL BE USED FOR 65 MM & ABOVE PIPES

FPS LEGEND	
SYMBOL	DESCRIPTION
	FIRE PIPE
	UPRIGHT SPRINKLER (AFC)
	PENDENT SPRINKLER (BFC)
	SIDE WALL SPRINKLERS
	4.5 Kg CO2 TYPE WALL MOUNTED EXTINGUISHER
	6.0 Kg ABC TYPE WALL MOUNTED EXTINGUISHER
	4KG CLEAN AGENT EXTINGUISHER
	BALL VALVE
	BUTTERFLY VALVE
	SLIGHT GLASS UNIT
	FLOW SWITCH
	PRESSURE GAUGE
	LANDING HYDRANT
	FIRE HOSE CABINET COMPRISING OF 63 mm DIA, SINGLE HEADED LANDING VALVE, 2 LENGTHS OF 63mm DIA, C.P HOSE REEL 15.0m LONG, 19mm DIA BRANCHPIPE WITH NOZZLE, RUBBER HOSE REEL 40M LONG WITH DRUM.
	10 KG MODULAR TYPE FIRE EXTINGUISHER

TENDER DRAWING

1. THIS DRAWING IS FOR INFORMATION AND REFERENCE AS A GENERAL GUIDANCE ONLY.
2. ALL DEPOT FACILITIES, PLANTS & MACHINERIES, ACCOMMODATION FACILITIES, SYSTEM WISE REQUIREMENTS ETC SHALL BE VERIFIED FOR MAINTENANCE REQUIREMENT OF ROLLING STOCK AND INFRASTRUCTURE FACILITIES.
3. ALL DIMENSIONS ARE IN METER UNLESS NOTED OTHERWISE AND TO BE READ ONLY NOT MEASURED.
4. ABSOLUTE RAIL LEVEL SHALL BE DERIVED FROM APPROVED ALIGNMENT DRAWINGS.
5. STRUCTURE SYSTEM SHOWN IS INDICATIVE. ALL STRUCTURE MEMBER SIZES TO BE DETAILED BY DESIGNER AT LATER STAGE.
6. THIS DRAWING HAS BEEN DEVELOPED IN CONFORMITY TO DPR, SDO, BSRPA OTHER COAL REQUIREMENTS.
7. SYSTEM ROOM SIZES, HEIGHTS, DOOR SIZE, FLOOR HEIGHT AND CUTOFF DIMENSIONS TO BE VERIFIED BY RELEVANT DISCIPLINES OF ENGINEERING.
8. SHAFTS FOR ELECTRICAL, S&T, PLUMBING, DRAINAGE, SEWAGE DISPOSAL, RAIN WATER HARVESTING, FIRE AND OTHER SYSTEMS SHALL BE PROVIDED AS PER SYSTEM AND MEP REQUIREMENTS.
9. ALL FINISHES ARE SUBJECT TO RIDE APPROVAL.
10. SPACE CONSIDERED FOR ELECTRICAL & S&T CABLE TRENCH DURING THE DETAILED DESIGN STAGE ELECTRICAL & S&T CABLE TRENCH WILL BE PROVIDED BASED ON DESIGN.
11. IN S TURNOUTS PROVIDED IN THE DEPOT.
12. 7M DISTANCE PROVIDED AT 2.5M METERS.

14

13

12

11

10

9

8

7

6

5

4

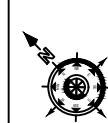
3

2

1

BARSYL
BALAJI RAILROAD SYSTEMS (P) LIMITED

TENDER DRAWING
DESCRIPTION



GENERAL CONSULTANT

K RIDE

PROJECT DIRECTOR

SR ALIGNMENT EXPERT

CHIEF TRACK EXPERT

CHIEF SIGNALING EXPERT

CHIEF TRACTION EXPERT

CHIEF TELECOM EXPERT

SR ROLLING STOCK ENGINEER

GM / CIVIL / DEPOT

GM / ROLLING STOCK

GM / TRACTION

GM / SIGNALING

DIRECTOR PROJECT PLANNING

DIRECTOR SYSTEM

RAIL INFRASTRUCTURE DEVELOPMENT COMPANY (KARNATAKA) LIMITED

PROJECT I.D: 2388

TITLE:
TIME OFFICE AND ADMIN BUILDING
FIRST FLOOR PLAN
FIRE FIGHTING LAYOUT

CONSULTANT : **BARSYL**
BALAJI RAILROAD SYSTEMS (P) LIMITED

SHEET NO: 1 OF 1
DRO NCX RIDE_BSRP_RS_ADMIN_SGVL_FF_02